

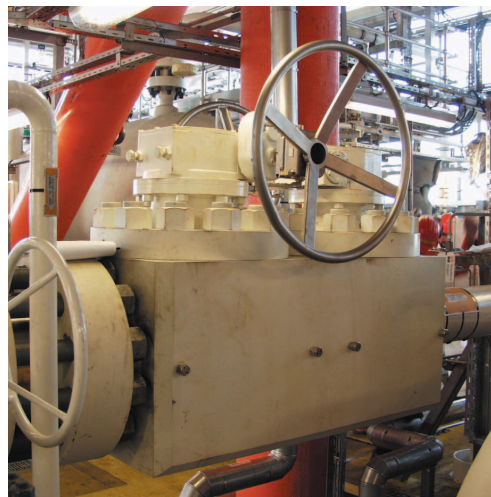
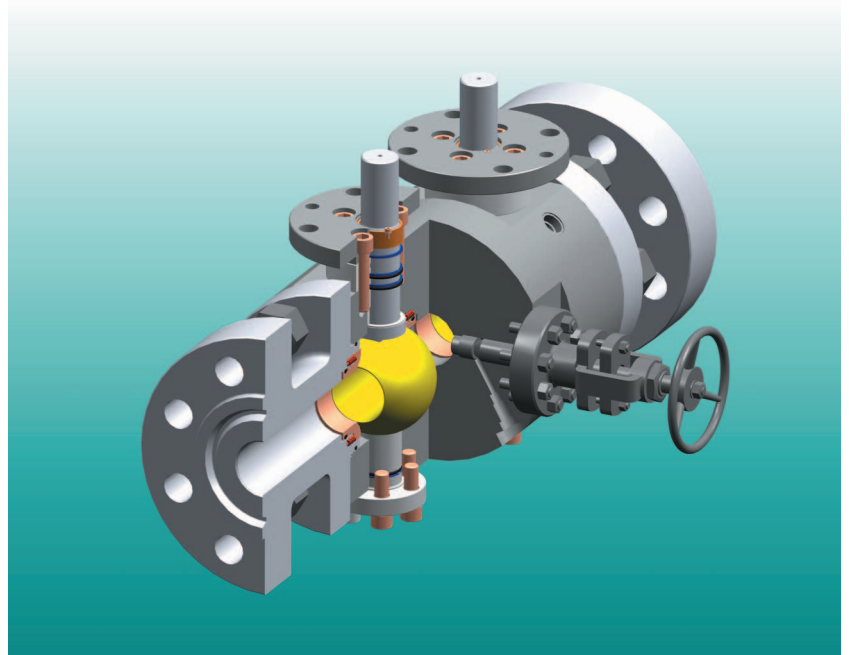


ABV Series BTD Side Entry Series BTX Top Entry

CHARACTERISTICS

- Double Block and Bleed Valves with double fixed balls hinged on supports, and floating metal or soft seats. Central Needle Vent Valve.
- Pressure Range: from ASME Class 150 to ASME Class 2500, and from API Class 3000 to API Class 15000.
- Temperature range: from -46°C to 450°C .
- Side Entry Forged Steel Valves.
- On request, Top-Entry design (BTX series).
- Low pressure loss through the valve.
- Low actuation torque.
- "CE" marking in compliance with PED Directive 97/23/EC.
- Full bore or Reduced bore.
- Different kinds of end connections (RF/RTJ Flanges, Butt Weld, Clamp Connection, Socket Welding).
- Wide availability of materials depending on the specifications (carbon steel, stainless steel or Duplex steel for service in corrosive environments, Chrome-Molybdenum alloy steel for high temperature service, etc.).
- Materials with anti-corrosion properties according to NACE MR 0175.
- On request, seat pocket area overlay, seal area overlay, or completed cladding on wetted surface (welded overlays in Inconel 625, Stainless Steel 316, etc., or Electroless Nickel Plating).
- Suitable for manual (wrench of gear) or motorized actuation (hydraulic, pneumatic, gas-over-oil or electric actuator).

Combined Ball Valves Side Entry and Top Entry Bolted Bonnet



AVAILABLE SIZES & RATING

• NS $\frac{1}{2}'' \div 16''$	ASME 150 ÷ 2500#	Full and reduced bore
• NS $\frac{1}{2}'' \div 4. \frac{1}{16}''$	API 3000 ÷ 15000	Full and reduced bore

Design and dimensions may be subject to change without notice, except the dimensions established by international standard specifications.



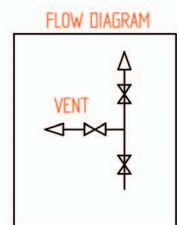
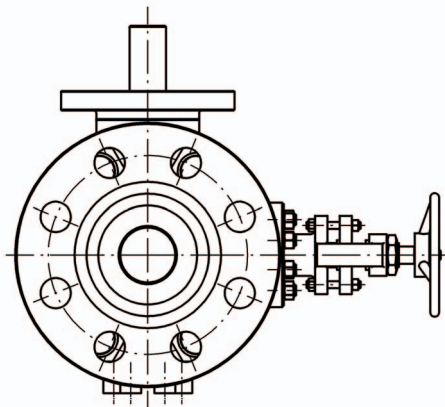
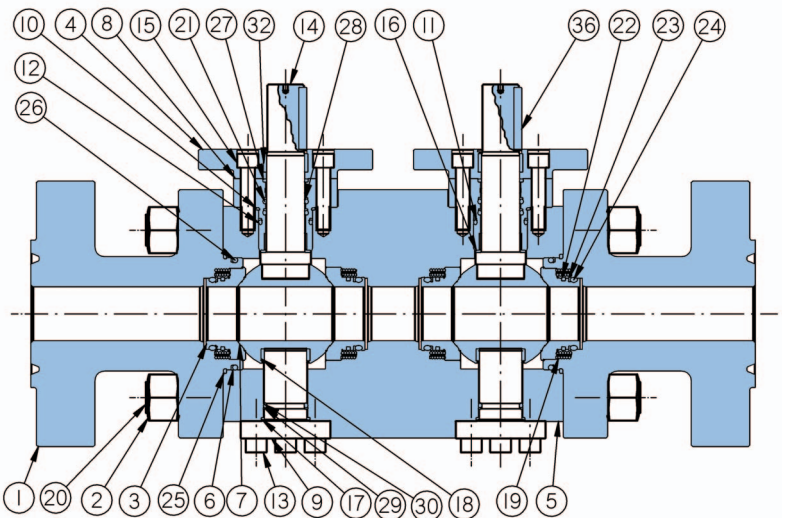
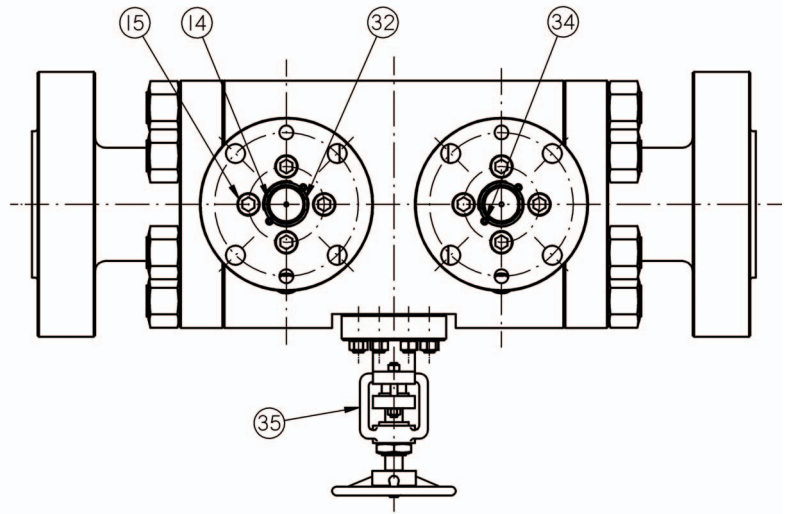
ABV

Series BTD

Side Entry Bolted Bonnet

DESCRIPTION

1. Closure
2. Body Stud-Nut
3. Seat Ring
4. Adapter Flange
5. Body
6. Closure Back-Up Ring
7. Ball
8. Gland Flange
9. Trunnion
10. Gland Flange Gasket
11. Gland Flange Back-Up Ring
12. Gland Flange O-Ring
13. Trunnion Cap Screw
14. Stem
15. Gland Flange Cap Screw
16. Stem Thrust Washer
17. Trunnion Gasket
18. Ball Bushing
19. Seat Spring
20. Body Stud
21. Stem O-Ring
22. Seat Gasket
23. Seat Back-Up Ring
24. Seat O-Ring
25. Body Gasket
26. Closure O-Ring
27. Stem Gasket
28. Stem Back-Up Ring
29. Trunnion Back-Up Ring
30. Trunnion O-Ring
31. Gland Flange Cap Screw
32. Adapter Flange Bushing
33. Washer
34. Cap Screw
35. Vent Needle Valve
36. Stem Key



Design and dimensions may be subject to change without notice, except the dimensions established by international standard specifications.



ABV

Main Features for Ball Valves type BT2-BT3 BTE-BTD-BTX

General

ABV ball valves series BT2, BT3, BTE and BTD are realized with the following standard characteristics:

- End connections including Flanges (Rised Face, Ring Joint Type), Butt Welds, Welded Pups, Clamp Connection, Socket Welding.
- Full Bore and Reduced Bore.
- Floating seats with automatic body cavity pressure relief (Self Relief Seats).
- Blow-out proof stem.
- Stem provided with guide bushings, to minimize operating torque.
- Stem sealant injection.
- Anti-static device.

For special requirements, **ABV S.r.l.** can supply the following optional characteristics (on customer request):

- Double Piston Effect.
- Double Block and Bleed .
- Metal to Metal sealing (for any application).
- Locking Device.
- Fire safe design.
- Seat sealant injection.
- Explosive decompression resistant seal for gas application.

Other possible characteristics can be agreed with **ABV S.r.l.**, to satisfy specific service requirements of the customer. In particular, **ABV S.r.l.** supplies valves for the following special services:

- Sub-Sea Service.
- Sour (H₂S) Service.
- Oxygen Service.

Design and dimensions may be subject to change without notice, except the dimensions established by international standard specifications.