

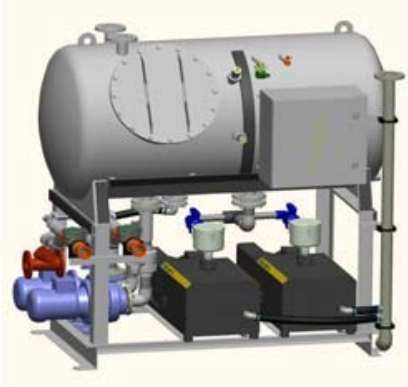
# EVAC Vacuum Collection Units

## EVAC Vacuum Collection Units

To create the vacuum for the system, it is necessary to employ an EVAC Vacuum Collection Unit. The EVAC Vacuum Collection Unit consists of a vacuum tank, vacuum and discharge pumps and control panel with the type and size dependant on the individual project including number of vacuum toilets, requirement for grey water handling and frequency of installed component usage.

Although all projects are tailored on a case by case basis, Evac do offer a number of purpose made packages to suit all types of projects.

All EVAC Units are designed and sized in accordance with European Standard EN12:109 and manufactured to European and International Standards.



## EVAC Vacuum Tank Units

The new Heavy Duty Series EVAC Vacuum Collection Units achieve enhanced operation through utilizing the latest pump technology enabling energy usage reductions up 50% lower than any other Vacuum product on the market to date.

Increased vacuum storage and dedicated vacuum pumps allow for complex new piping designs on large buildings, even with only one vacuum generation unit. By separating the EVAC vacuum pumps from the discharge pumps at the EVAC vacuum collection station a far more efficient operation through the system life cycle can be achieved over conventional combined duty pump setups.

The EVAC Vacuum Collection units are fully automated, require very little maintenance and can be easily upgraded to enable greater collection flexibility.



### Sydney

### Perth

# EVAC Vacuum Toilets & Interface Units



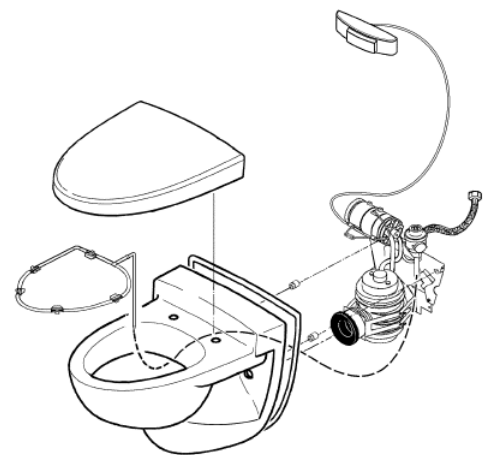
## EVAC 910 – Vacuum Toilets (Silenced)

The latest EVAC 910 Vacuum Toilets by EVAC are the quietest Vacuum Toilets in the industry to date and at only 80dB, are comparatively the same as a conventional gravity pan. Being made from the finest porcelain with the deluxe 'Prestige' seat and cover, they are well suited to almost every application. EVAC's 910 Vacuum toilets can be supplied in wall or floor mounted configurations and are available in a range of colours.

The Seat and Cover of the latest EVAC 910 Vacuum Toilets are produced with a technologically advanced anti-bacterial product offering superior hygienic protection, resistance to burns and scratches and has a load rating of up to 280kg.

The EVAC 910 Vacuum Toilet requires no electrical connections and utilises the proven pneumatic flush mechanism, flush memory activators and vacuum sensing technology. With a tested lifecycle of more than 300,000 flushes and its radically reduced water consumption (1.2 L/flush) the EVAC 910 Vacuum Toilet will continue to save our precious resources while keeping through life costs down.

The EVAC 910 Vacuum Toilet is the market leader in Vacuum Toilet technology and with each delivery supplied complete inclusive of your choice of seat & cover and the easy installation kit, your system is ready to go once connected to the installed vacuum network.



**HiFraserGroup**

## Sydney

6/5 Vuko Place Warriewood NSW 2102  
PO Box 885 Mona Vale NSW 1660  
Ph (+612) 9970 7322 | Fax (+612) 9913 7207  
H.I.Fraser Group Pty Ltd | ABN 67 003 343 271

## Perth

27a Stockdale Rd O'Connor WA 6163  
Ph (+618) 9314 7877 | Fax (+618) 9314 5933  
[www.hifraser.com](http://www.hifraser.com) | [www.evac.com](http://www.evac.com)

# EVAC Vacuum Toilets & Interface Units



## EVAC 2L & 5L – Vacuum Interfacing Valves

The EVAC Vacuum Interfacing Valves are available in 2 and 5 litre units. The 2 litre unit (upper picture on the left) is made of polypropylene and the tank of the 5 litre unit (lower picture on the left) is made of corrosion resistant AISI 316 Stainless Steel.

Both units require no electrical connections and utilise the proven pneumatic flush mechanism, flush memory activators and vacuum sensing technology as seen across the EVAV Vacuum Toilet range. The EVAC 2L & 5L Vacuum Interfacing Valves consist of hassle free, reliable components allowing quick and cost-effective maintenance throughout their lifecycle.



### Sydney

### Perth